

Contents

- **1**
- **6**
- **8**
- **14**
- **18**
- **20**
- **23**

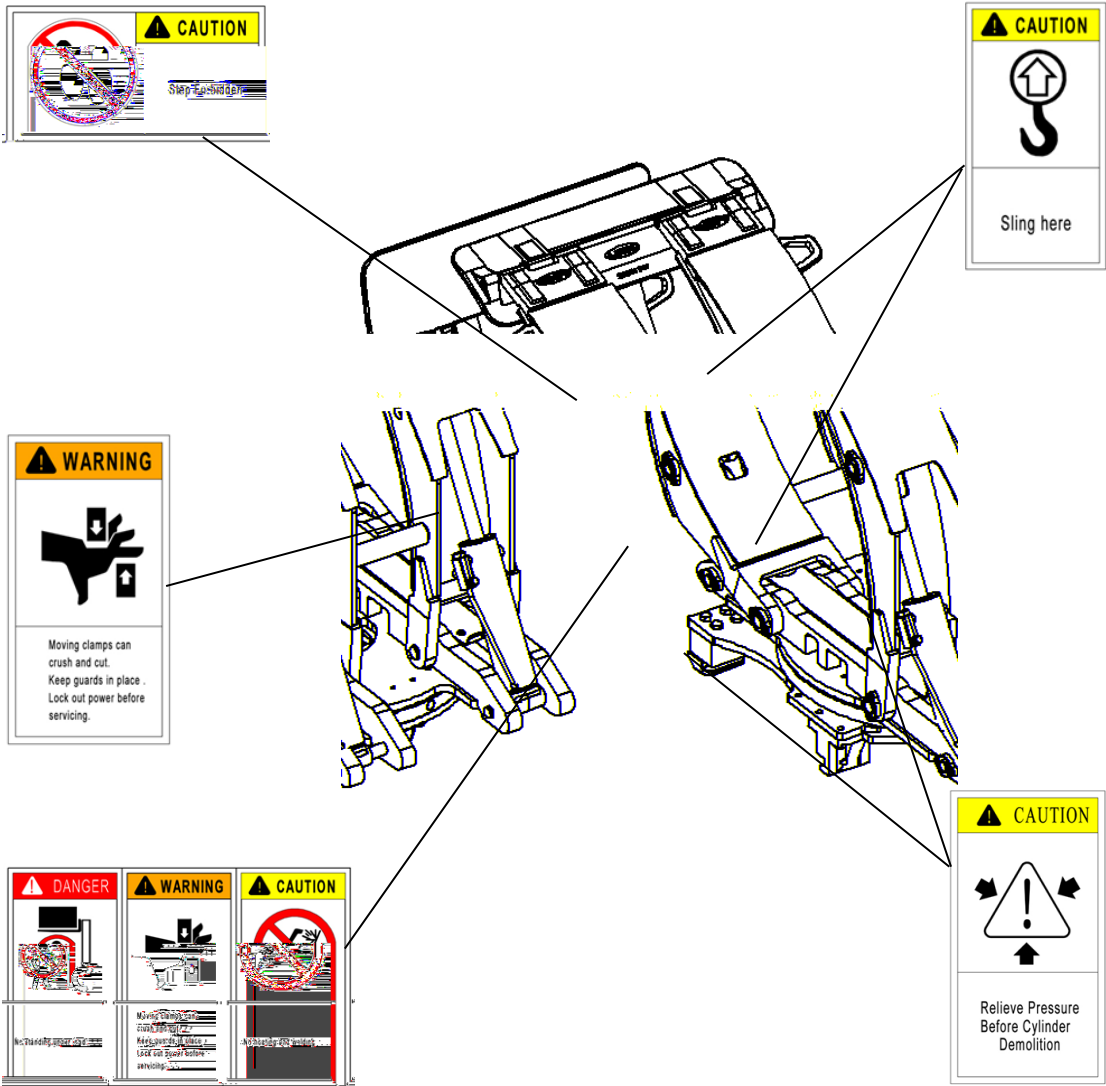
B Ue

B Ue cIb S a b

▲ 30 64A

▲ F0A 8 6

▲ 20 DC8



! a c c**lb**

■

■

■

■

■

" Ta c a bB U**c** c**lb**

WARNING!

■ T

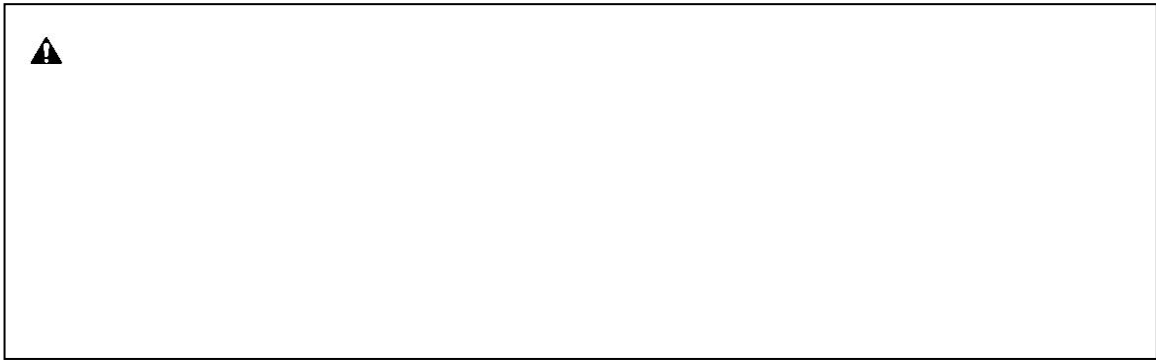
■

■



■

■



1 c A c

!

!

"

!

""

!

"

■

■

6 T Ta 7 aS cIb

■

■

■

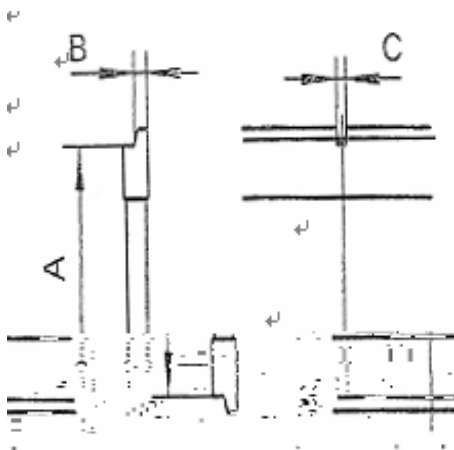
! d c 8 headRc b

A cIS S R Rc

0 Rd R aa R Rc



Model	Pressure value bar		Flow value L/min		
			Rotary motion		
	min	max	min	recommend	max
ZJ10R/11R/12R/13R/13H	140	160	19	26	38
ZJ22H/25H/27H/33H	140	160	19	38	57
ZJ38H/35R/42H/45R	140	160	38	57	76

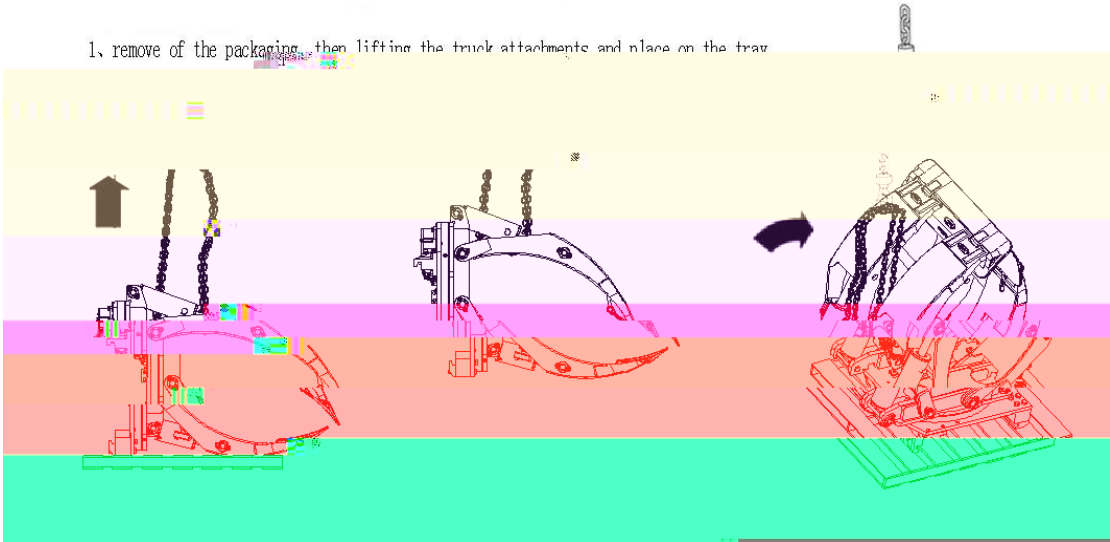


Installation level	A		B		C	
	min	max	min	max	min	max
	380	381	15	16	15.2	16.8
	474.5	476	20.5	21.5	18.2	19.8
	595.5	597	24.5	25.5	18.2	19.8

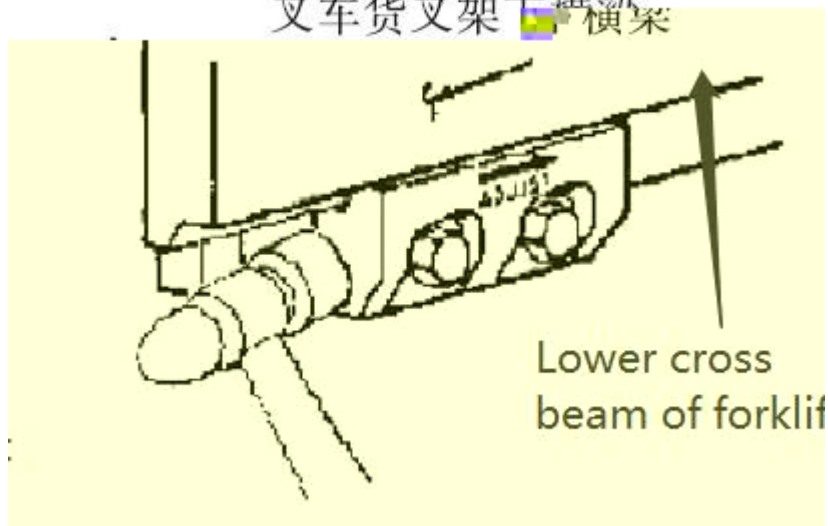
Figure 1

" 8 bc c TeWSb

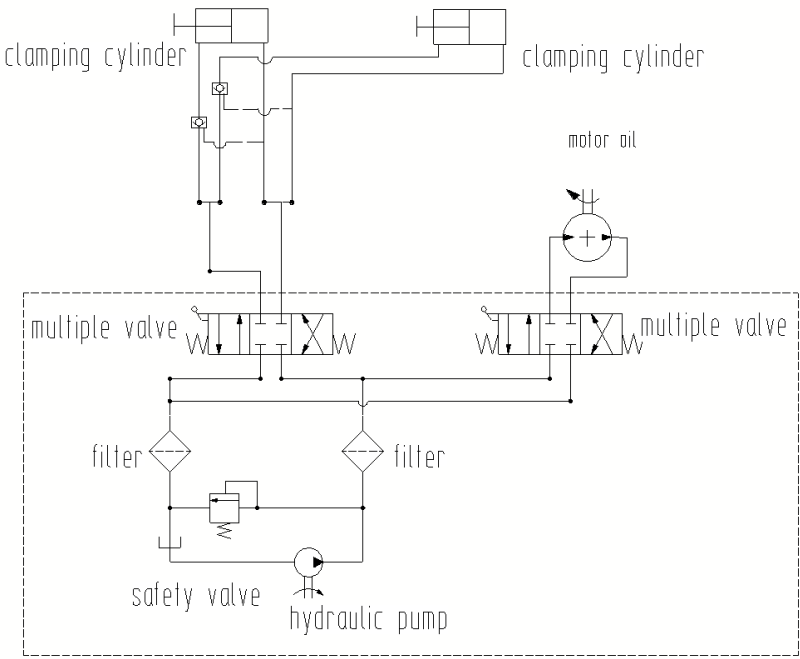
1, remove of the packaging, then lifting the truck attachments and place on the tray

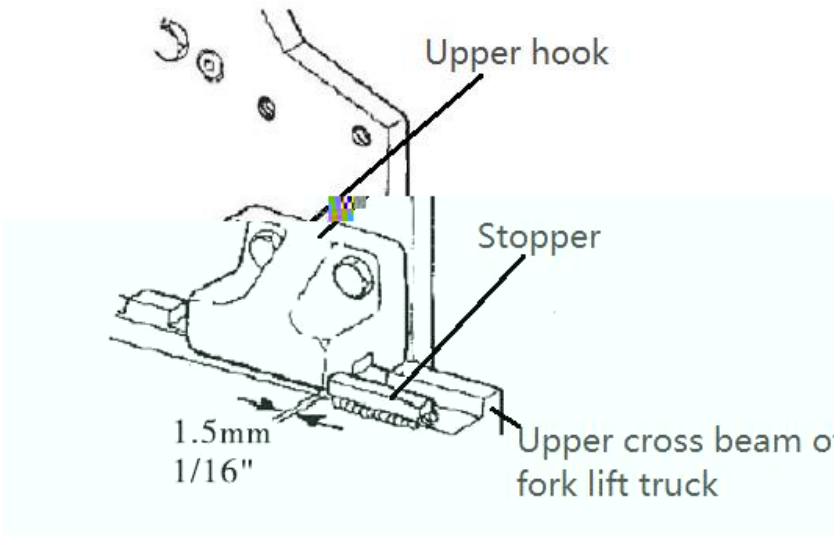


叉车货叉架下横梁

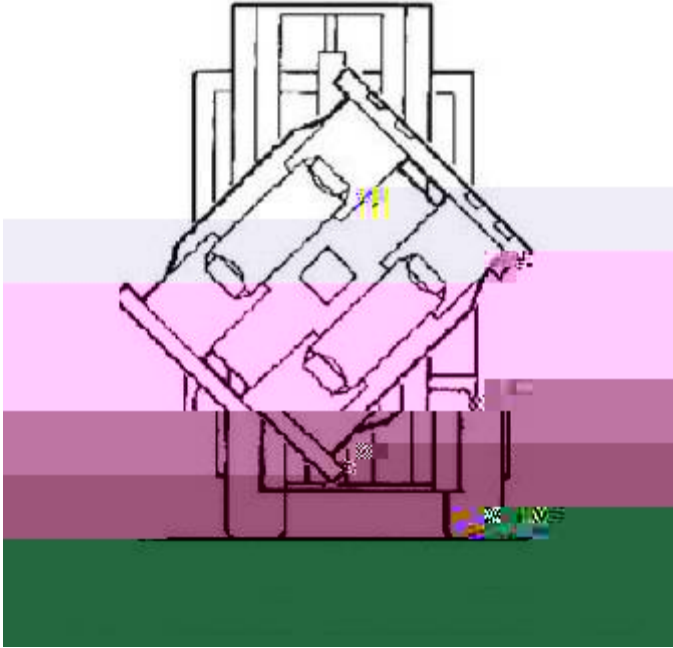


Roll Clamp User Manual

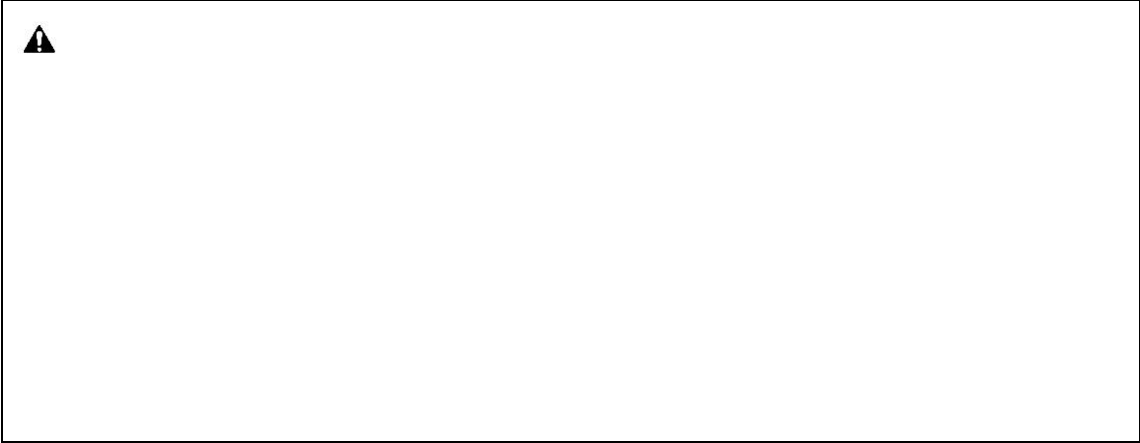




Upper hook Stopper Upper crossbeam of the forklift carriage



Turn to any point of 45° to adjust the short arm



--	--	--



Roll Clamp User Manual

Ta c 8 bcadRc b



Roll Clamp User Manual



Roll Clamp User Manual



Roll Clamp User Manual



cT RT S R bTae c



Roll Clamp User Manual

Ca d TbW c



Roll Clamp User Manual



Roll Clamp User Manual



B TR Bc cT T c



Roll Clamp User Manual
