

▲ L -- ,

▲ ,

▲ , ,

' M ,

▲

▲ -- : ,

▲ : .

▲ : , .

▲ ,

.....	1
.....	7
.....	10
.....	12
.....	15
.....	18
.....	19

▲

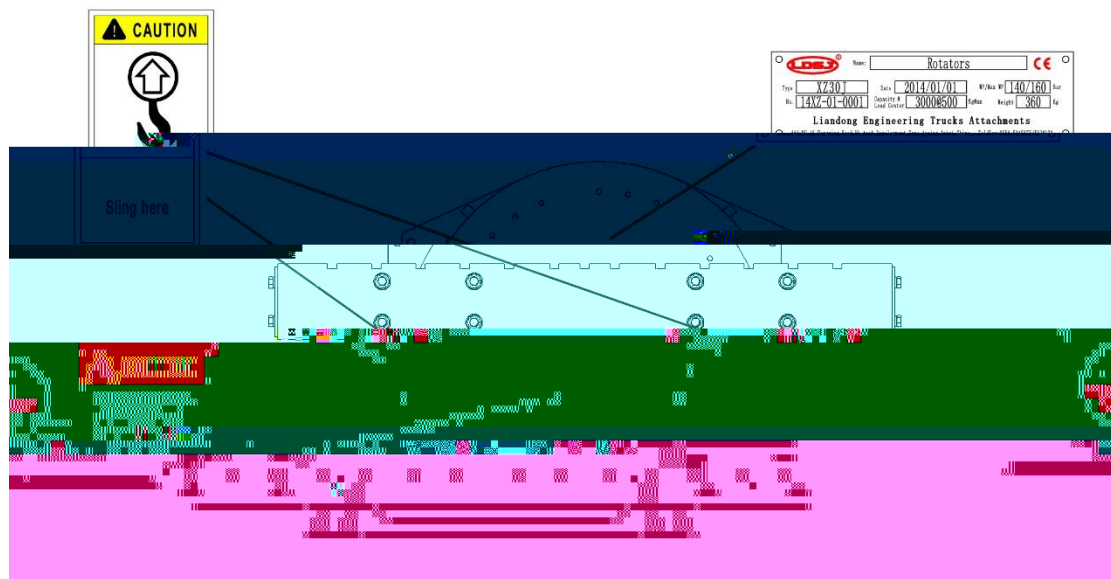
.I

▲

.I

▲

▲



A

-

，
20 40 ，
85% ， 1000 ，
5 / .

1.3.1

1.3.1.1

A

， ， :

F

D

1.3.1.2

G

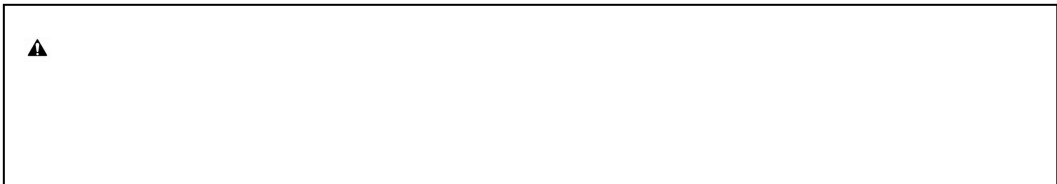
H

F

C

1.3.2 I

(-)



1.3.3

.A ()

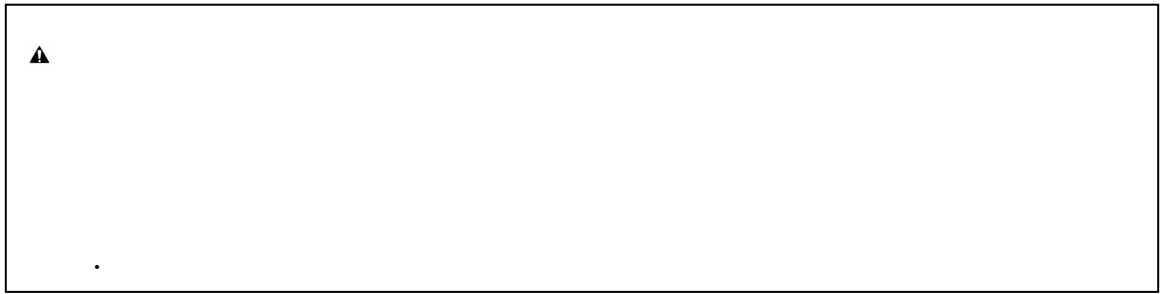
A

M

C

1.3.4 M

E



I



I 4762 , I 4014 , I 4032 . :

F

,

,

,

10 (G1/4") ;

B

28M ;

(

14M). . C

:

M			F	L/	
17*	35	160	19	26	38
22*/30*/35*	35	160	19	38	57
45/*60*	35	160	38	57	76

D :

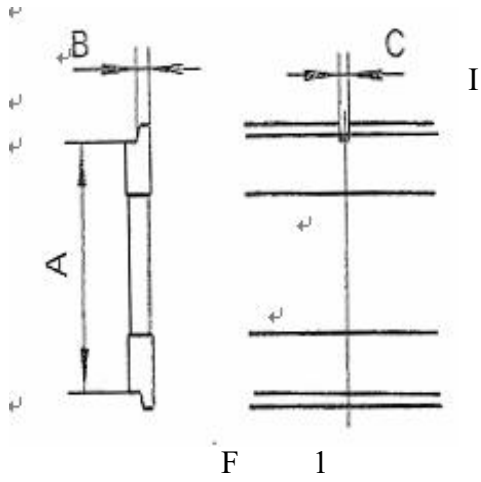
L

G

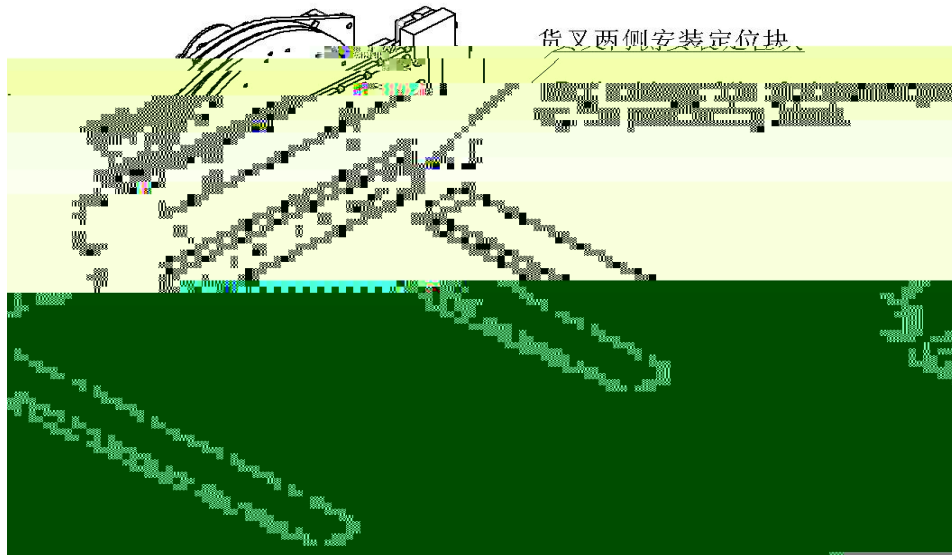
F . 1 (

I 2328-2007),

:



	A	B	C		
	380	381	15	16	15.2 16.8
	474.5	476	20.5	21.5	18.2 19.8
	595.5	597	24.5	25.5	18.2

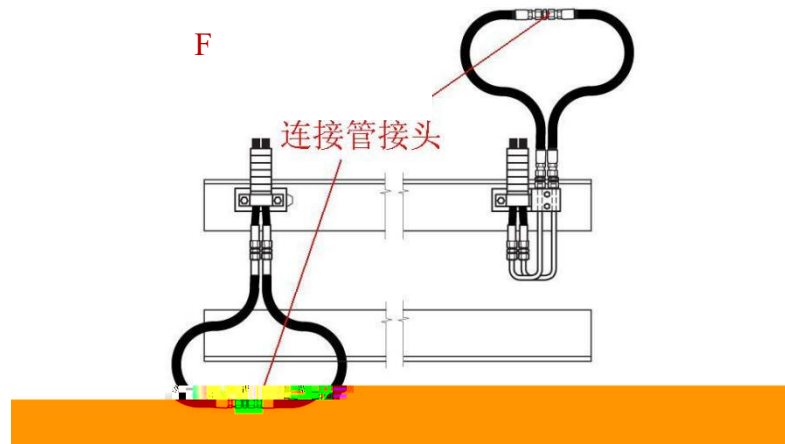


3.3

H .

C

30



▲

:

3.3



Rotator User

4.1.2 C

4.1.3 I

4.2.1

4.2.2

4.3.3

I

D

I

D

D

I

I

4.2.4

4.2.5

4.2.6

4.2.7 A

D

5.1.1

5.1.2 I

5.1.3 A

5.1.4 A

5.1.5 E 100

5.3.1 F

5.3.2

5.3.3

5.3.4 I

5.3.5

5.3.6 F

()

7.6

5.3.7

7.6

5.3.8

5.3.9

5.4.1 D

.I

5.4.2

10 ,

(. ,

).

5.5.1

C

5.5.2

5.5.3

-)

5.5.4

()

5.5.5 C

5.5.6 E

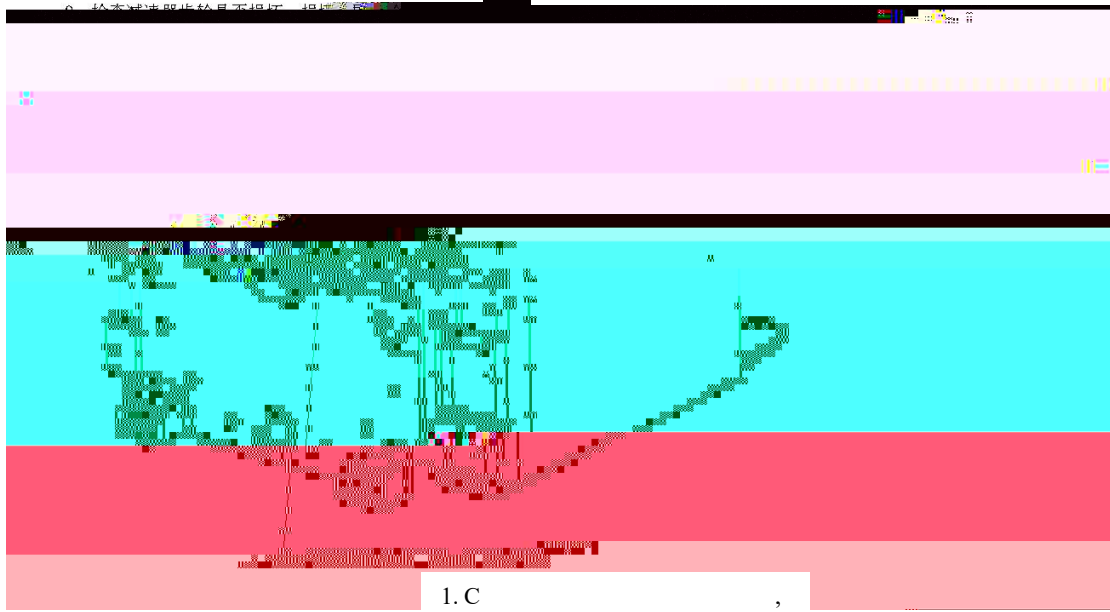
L

. D

I , :

2.C

3.C





7.1



E " A L E 7UXF A @D` C.,L . EH

(1) 24 4,000 , ,

(2) E - . .

12 2000 , . □

7.2

M

7.3 :

(1) A L E A C., L .
A .

(2) A L E A C., L .
,
.

(3) A L E A C., L .

A L
E A C., L .